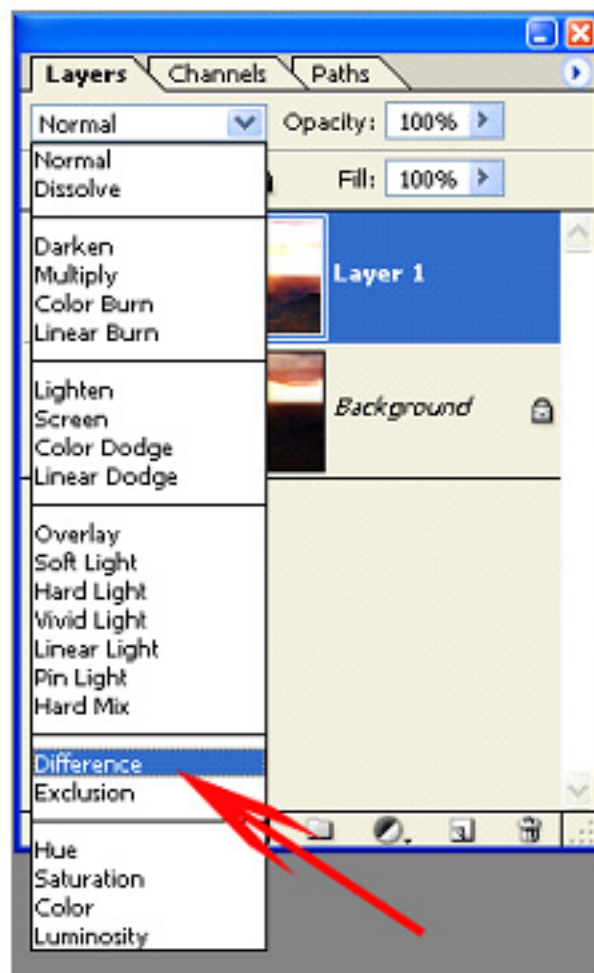


# Combining Exposures

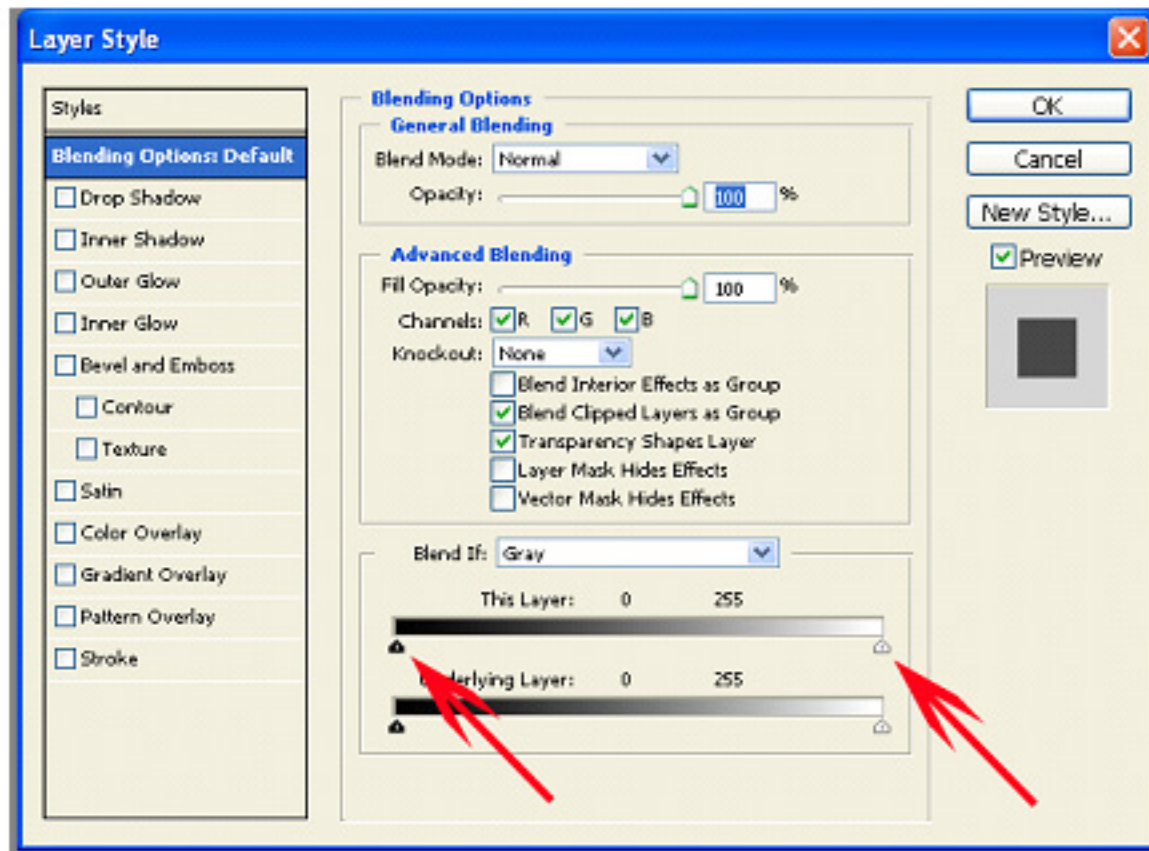
Mary Ann Simsek July 2004

1. Open 2 images of the same subject that have been photographed at different exposures--one for highlight detail, one for shadow detail.
2. Drag one image on top of the other. Holding the shift key down while dragging will help to align the images, if they were shot on a tripod.
3. Set the blending mode of the top image to **Difference**.



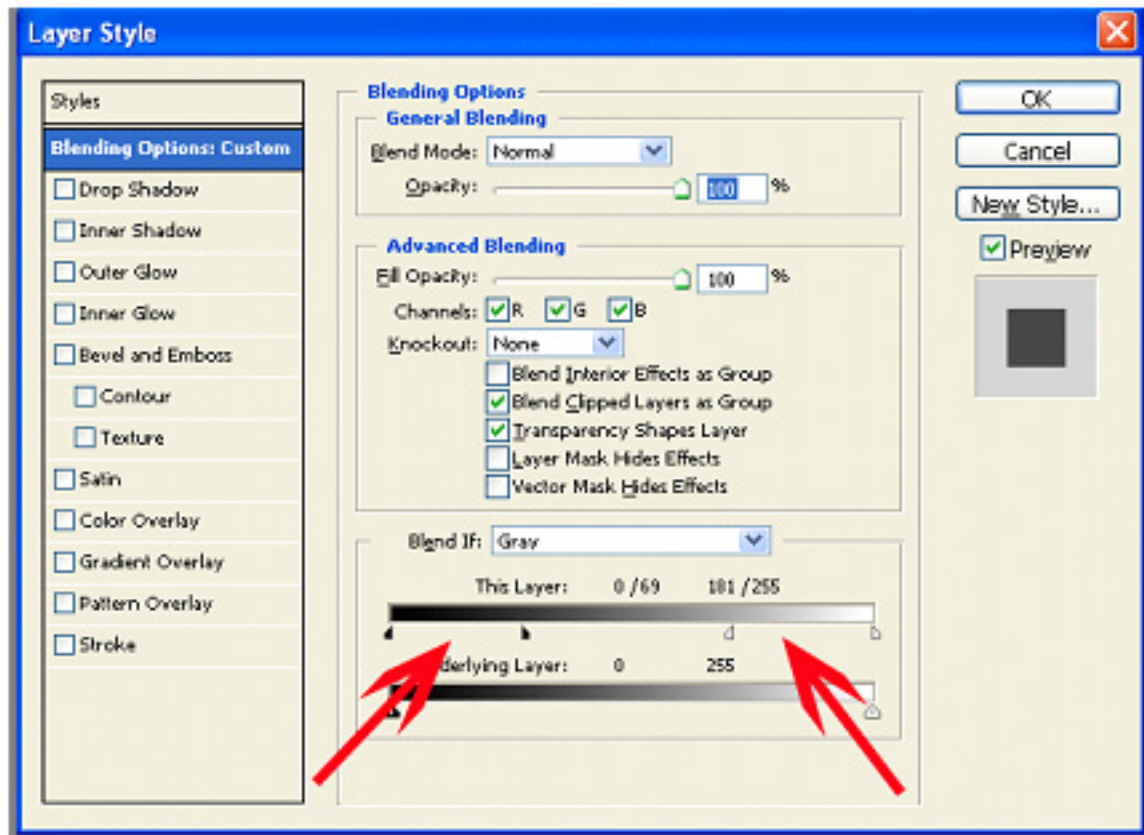
4. Select the move tool.

- Using the arrow keys on your keyboard, reposition the top image until it turns black. This indicates that the layers are lined up.
- Change the blending mode back to **Normal**.
- To blend the two exposures, double click on the top layer thumbnail to bring up the Blending Options dialog box.



- Go to the *Blend If* sliders (see above).
- Where it says “This Layer”, it is referring to the layer you are currently working on.
- Slide the dark slider to the right to hide the dark areas, and the white slider to the left to hide the light parts of the image.

11. Your transitions will look very harsh. To smooth them, hold down the Alt key to split the slider, and move it the proper direction to get the blend you are looking for.



12. Fine tune the image by adding a layer mask and painting in black or shades of grey in the transition areas.