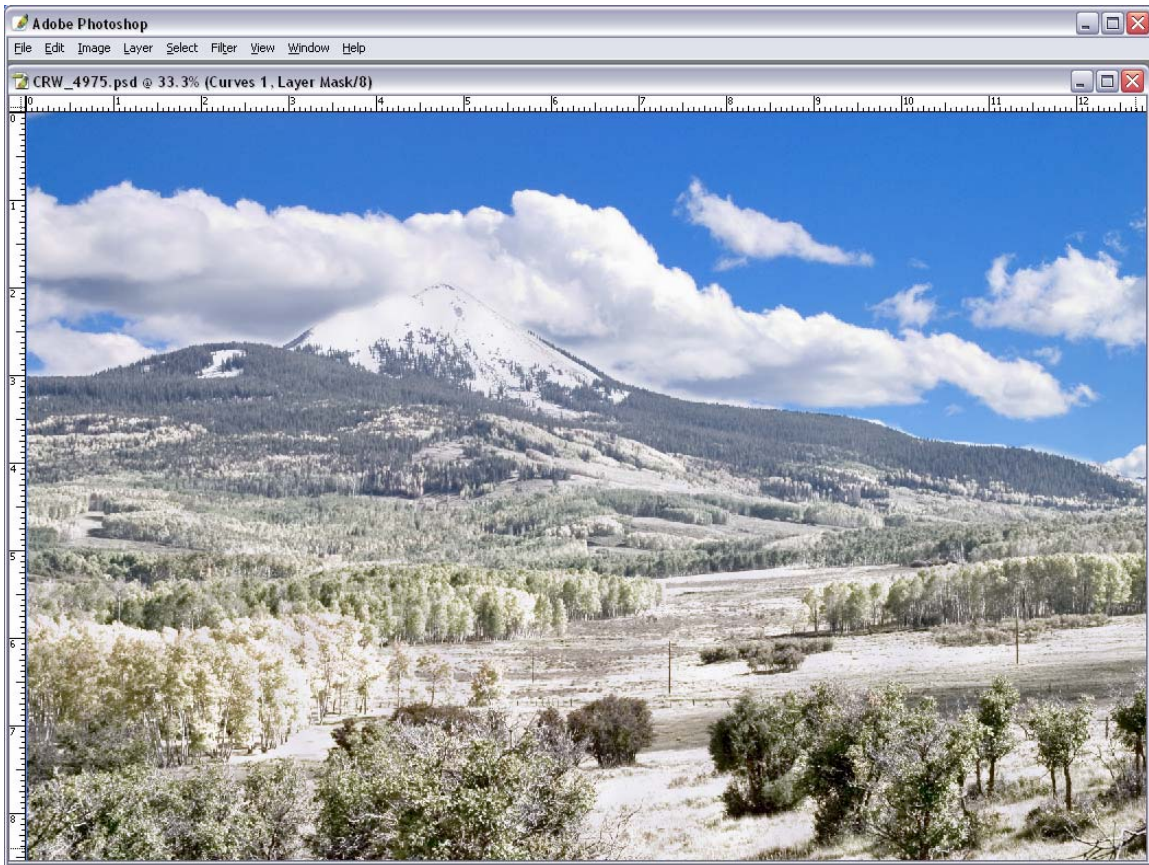


Creating a Snow Scene

This month I'll start with showing you a nice winter scene from the Colorado Mountains:

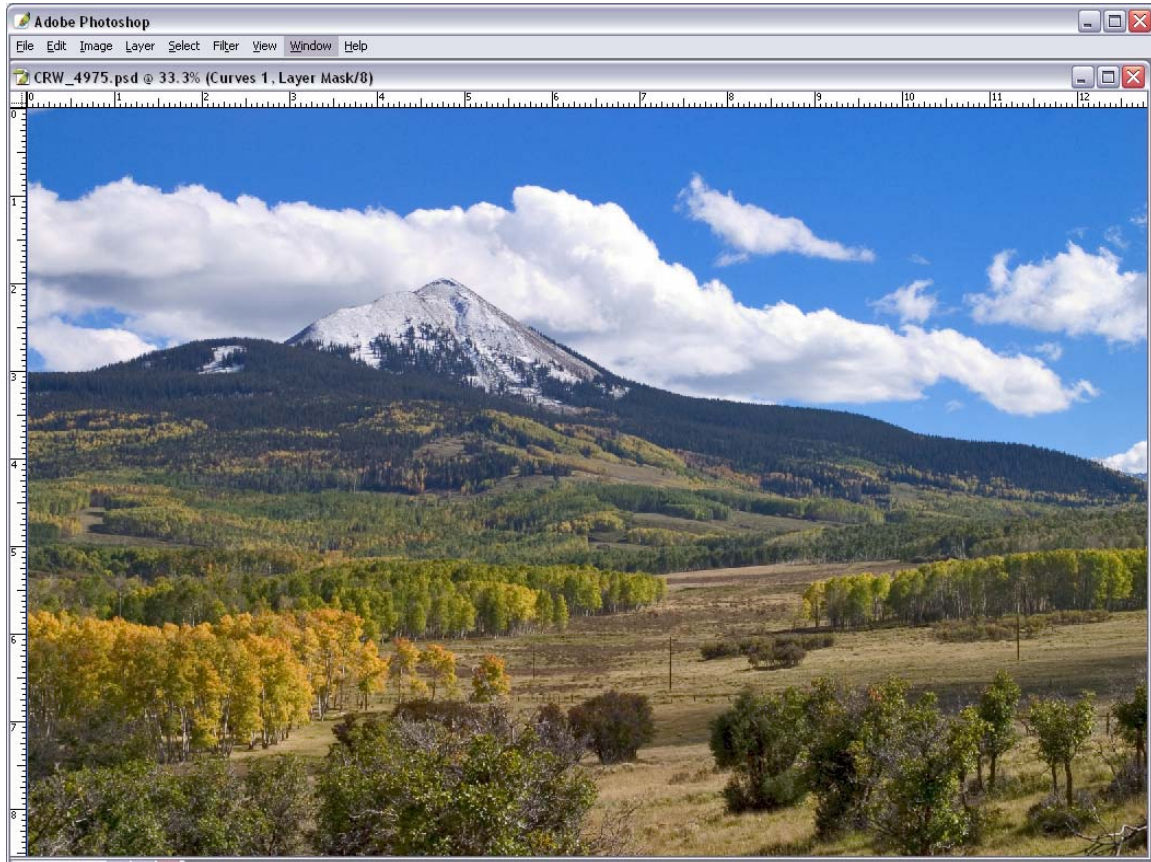


A nice light snow fall has covered much of the ground and the trees.

Do you believe it? If not, then I guess you won't find this technique all that interesting but if you do read on

I guess if I waited long enough there might have been snow but that could have taken weeks.

Here is the original shot:



And now for the technique. We start by making a selection of that part of the image where we want to add snow. In this case it is everything below the sky.

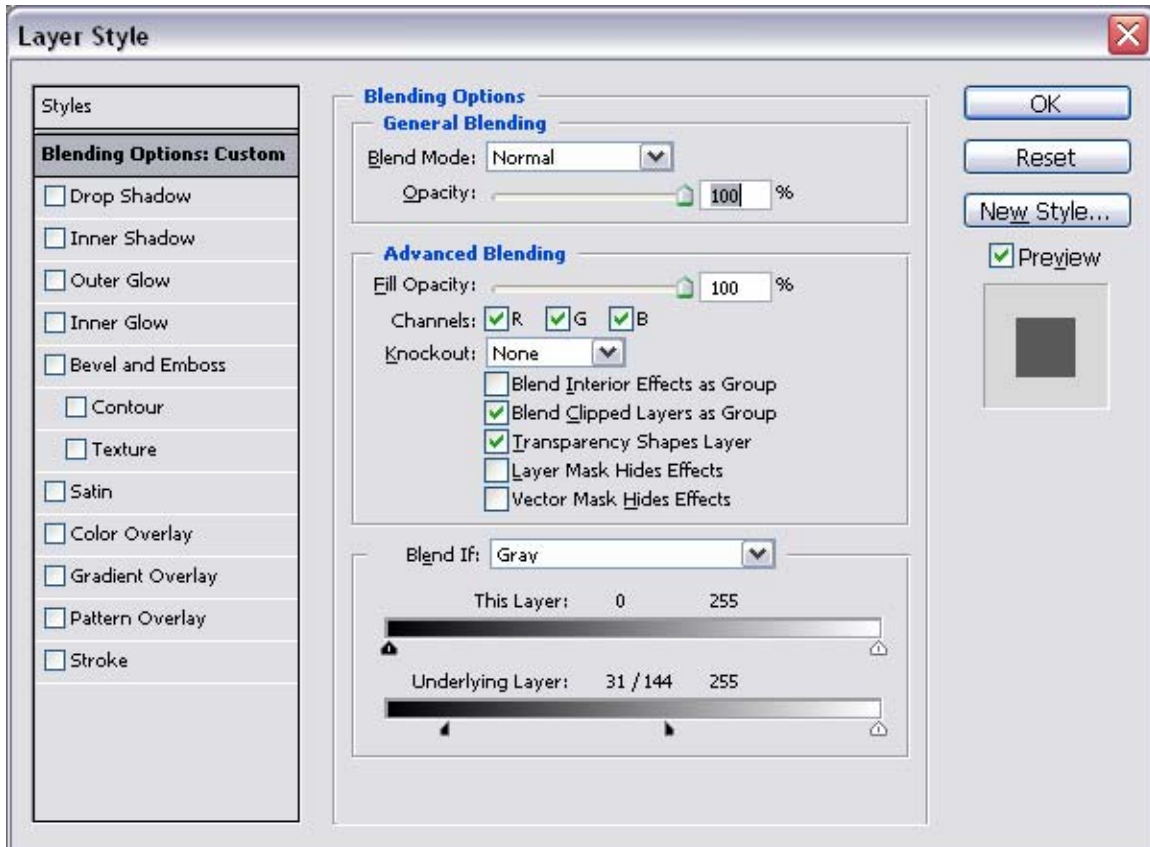
Next, create a new layer using that selection. Lock transparency on that new layer.

Set the foreground color to a very, very light blue or gray. Think of this a just a darker white. Set the background color to white.

Apply Filter>Render>Clouds to the new layer. Having set lock transparency on this layer will cause the filter to only apply to the selected area.

Open the Layer Style dialog box for this layer set to Blending Options. Move the leftmost slider of “Underlying Layer” to the right to allow the layer below to come through. Split the slider marker by holding down the ALT key and fine tune the slider until you get the effect you want.

Below are the settings used in this example:



You can use this technique to turn any image into a winter snow scene. The Render Clouds filter between white and off-white can give you the effect of a very slight tint that is a reflection of light from the sky. It also gives some texture to the snow. In a scene such as that used in this example you probably won't see those effects but with some images you will.