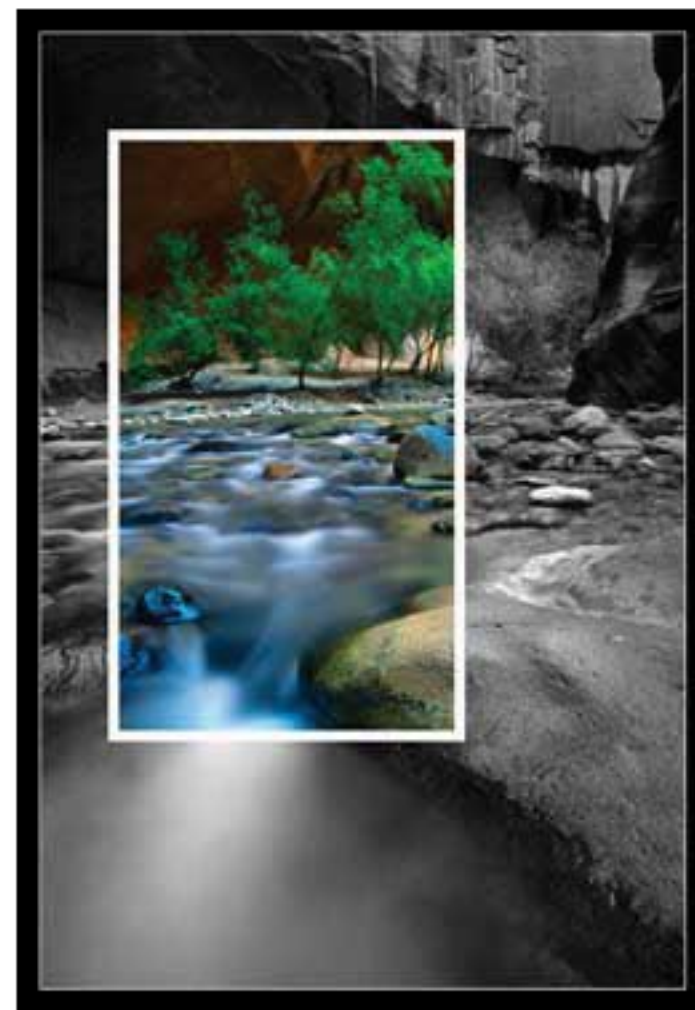


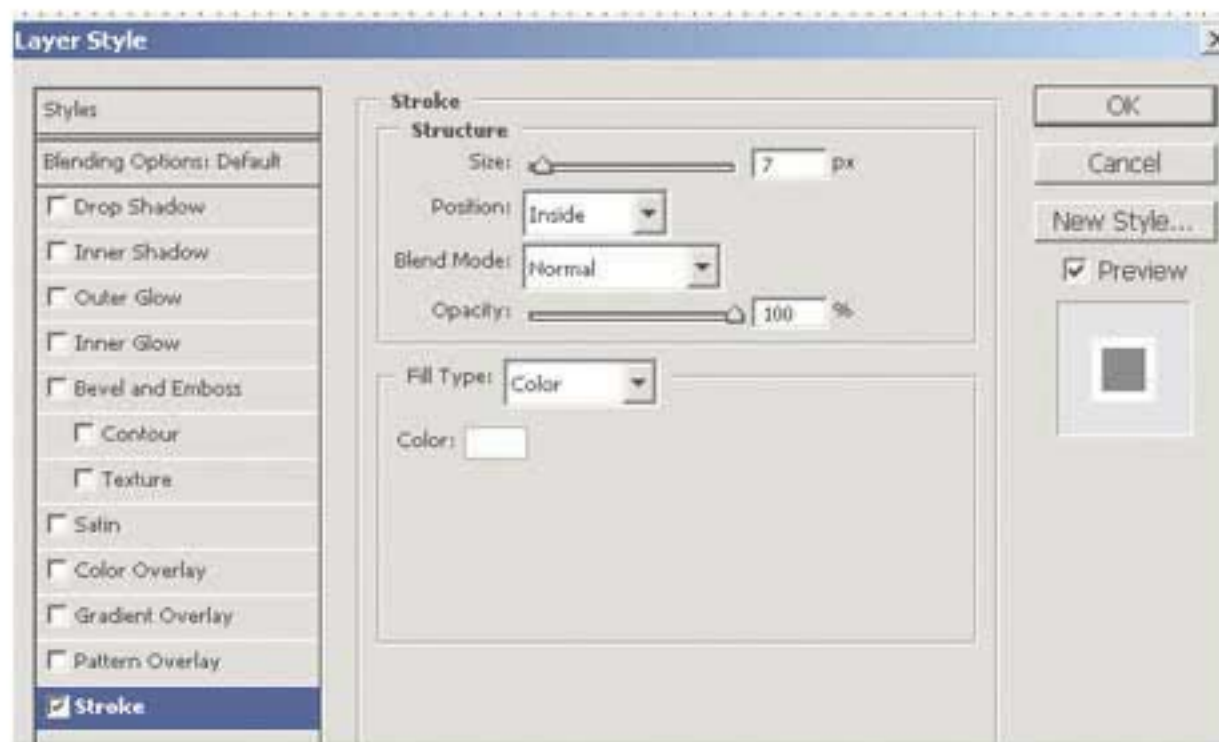
Creating a Color ‘Snapshot’ in a Black and White Photo

Mary Ann Simek March 2006

1. Open a color image with which you want to create this effect.
2. Add a new blank layer--click on the new layer icon at the bottom of the layers palette.
3. Select the Rectangular Marquee tool and “draw” out the size of the snapshot you want within the picture.
4. Go to Edit, Fill and fill the layer with any color other than white.
5. Deselect (Ctrl/Cmd D).
6. Add a stroke around this selection--double click on the layer to open the Layer Styles dialog box, or click on the layer styles icon at the bottom of the layers palette and select “Stroke”.



7. Once you have the “Stroke” dialog box, set the color and width of the stroke you would like. Be sure to choose “inside” for “position” in order to maintain square corners.



8. In the Layers palette go to the **Fill** opacity and reduce it to 0.

9. Hold down the Ctrl/Cmd Key and click on this Layer Thumbnail to load it as a selection.

10. Go to the bottom of the Layers Palette and click on the “Create new fill or adjustment layer” Icon and select Hue/Saturation. Lower the saturation to -100. You may also have to lighten the image or lighten one of the color channels. The picture will now appear just backward from what you actually want. Your “snapshot” will be in black and white, and the remainder of the image will still be in color.

11. Click on the layer mask of your Hue/Saturation Layer and type Ctl/Cmd I to invert, or go to Image--Adjustments--Invert.

12. Link these two layers together (in CS2, shift click on the layers to select both and then click on the link icon at the bottom of the layers palette) Layer--Link Layers.

13. The ‘snapshot’ can now be moved to any part of the picture, and that part of the picture will appear in color. It can also be resized or tilted by using Edit--Free Transform. These layers can be moved onto another image to create a similar look; so once you have created the affect you won't need to go through all these steps again to apply it to other images.